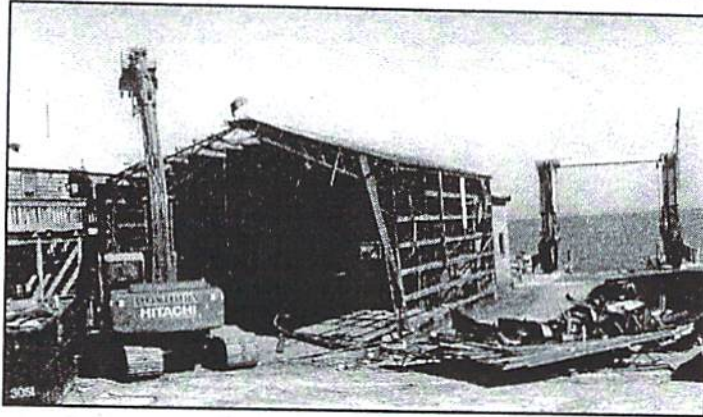


Snug Harbor

Duxbury Clipper

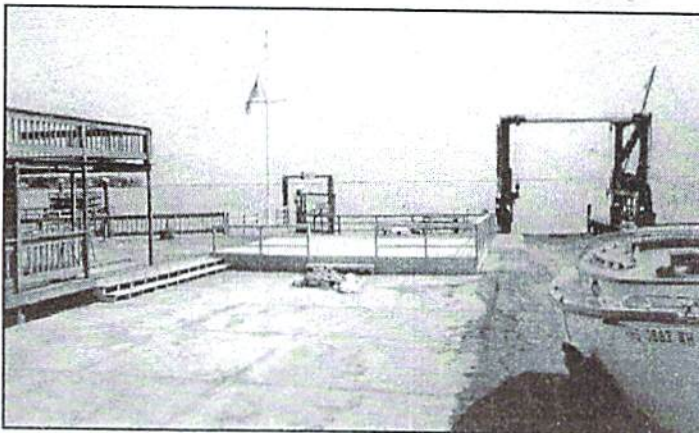
Wednesday, April 14, 1999



The Tin Shed at Snug Harbor.



The old tin shed is removed on March 17.



The unsightly shed is replaced by a spectacular view of the harbor!

Old Shed Removed at Snug Harbor

On March 17, the old tin shed located to the south of the Duxbury Bay Maritime School office building bit the dust. Removal of the building, which was dilapidated, will provide space for a new deck and courtyard that will be constructed after the bulkhead is replaced next fall. The open area will provide much needed space for special events and class space on days when it is too windy to sail. Removal of the shed has also enhanced the view from the apartments over the DBMS office.